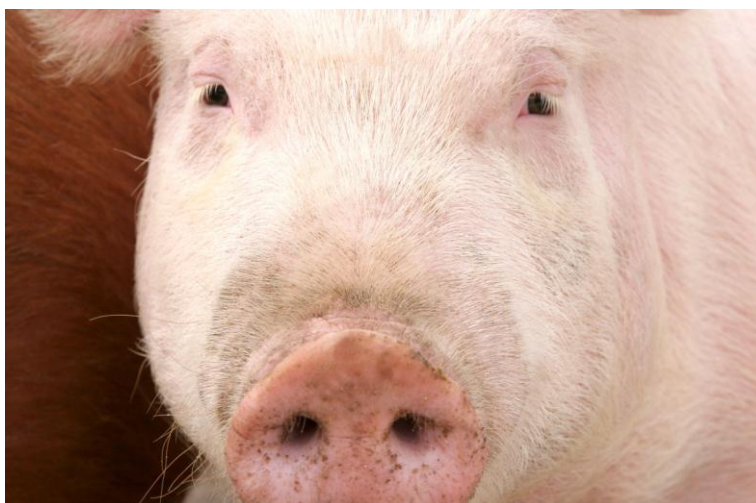


# **Certificate in Advanced Veterinary Practice**

## **B-PAP.2 Production Animal Practice (in the context of pigs)**

### **Module Outline**



**Module Leader: Dr Mandy Nevel BSc BVetMed PhD MRCVS**

**Senior Lecturer in Pathology & Infectious Diseases**

CPD Unit  
Royal Veterinary College  
Hawkshead Lane  
North Mymms  
Hertfordshire  
AL9 7TA  
Tel: +44 (0)1707 666201  
Fax: +44 (0)1707 666877  
Email: [certavp@rvc.ac.uk](mailto:certavp@rvc.ac.uk)  
[www.rvc.ac.uk/certavp](http://www.rvc.ac.uk/certavp)

## GUIDANCE FOR THIS MODULE

This document gives additional guidance to candidates wishing to take B-PAP.2 module in the context of pigs.

The Production Animal Practice module covers the principles of practice with any or all production animals – cattle (both dairy and beef), sheep, pigs and poultry. It may be taken in the context of just one species, as the general principles of production animal practice are deemed to be relevant to all. It is relevant to a number of species and discipline based designated modular certificates, including veterinary public health, animal welfare and reproduction. It can also be taken as a stand alone module.

This module is **required** for all candidates who are aiming to achieve a production animal 'named' certificate. It may also be taken in conjunction with other B modules for those who work in mixed practice.

This module can be covered in the context of one or more production animal species.

## LEARNING OBJECTIVES

Candidates should have a sound grounding in the areas of practice listed below. They also need to develop the skills needed to create case studies that demonstrate the following competencies:

- The written communication skills required to present case studies:
- An ability to demonstrate their competence in observation, data collection, analysis, reasoning, decision-making and advice delivery in the area under discussion
- Reflective skills that enable them to understand the issues raised by the case and their practice more generally, what they learnt from it.

## LEARNING TOPICS

### 1. The Basics

#### Overview of the Industry

- The National Herd
- Breeding pyramids, integrators, family farms, and pet and hobby farms
- Importance to the UK Economy
- The UK marketplace
- Structure and organization of the industry in the European Union
- Appreciation of the Global position, and influences
- Current and future trends, UK, EU, World
- Government and EU influences on production systems and requirements
- Key performance indicators
- Economics of disease control, both nationally and herd based

#### General principles of the needs of the pig

- Housing and environmental needs
- Systems of ventilation
- Principles of nutrition and basic requirements
- Condition scoring
- Normal behavioural patterns, and their alteration by disease, pain & stress
- Pain recognition and assessment

Legislation relevant to Pig production (awareness of)

- Legislation affecting pig welfare
- Legislation relevant to disease control
- Transport regulations
- Slaughter regulations
- Welfare organisations

Welfare

- The five freedoms
- Codes of recommendations for the welfare of pigs
- Advantages and disadvantages of intensive and extensive systems at all stages of production.
- Care and welfare of sick and injured pig
- Transport of the casualty pig
- Euthanasia of pigs
- Impact of biotechnology on welfare

## **2. Preventative Medicine, Biosecurity and Zoonoses**

- Principles of disease control, international, national, multiple herd and individual herd basis
- Management disease control measures
- Principles of Epidemiology
- Disease surveillance and monitoring
- Principles of health planning

- Principles of immunisation and vaccination
- Commonly used vaccines in pig production
- Prevention and control of notifiable diseases
- Principles of Biosecurity: external and internal
- Export and import certification
- Disinfection and disinfectants
- Zoonoses

### **3. Basic Fertility and Reproduction**

- Principles of fertility and fecundity
- Knowledge of the oestrous cycle
- Methods of pregnancy diagnosis
- Principles of boar & sow management
- Pedigree pig breeding
- Farrowing systems
- Care of the neonatal litter
- Common management procedures of the neonatal pig

### **4. Diagnosis of Disease, (both the individual and the herd)**

- Principles of clinical examination
- Post Mortem examination

- Selection, collection and handling of laboratory samples
- Principles of sensitivity and specificity of diagnostic tests

## **5. Therapeutics**

- Basic understanding of the clinical pharmacology of drugs commonly used in pigs
- Prudent use of medicines
- Pharmacy regulations
- Storage of medicines
- Legal requirements for the use, recording, disposal of medicines

## ASSESSMENT

- **5 case reports**, essays or short case series with a word count between 1,000 and 1,500 words each. The candidate should have managed or have had a significant involvement in all of the cases and the cases or essays should cover each of the main areas of the module.

Cases selected should illustrate that the candidate has dealt competently with a range of commonly presented conditions or situations from the area of practice in which they are working.

- A **1,000 - 1,500 word reflective synopsis** justifying the candidate's choice of cases and reflecting upon the candidate's learning during the module. This might include what has changed in their approach to a case, any new procedures or investigations that are now considered, any additional reading which was helpful, and/or any unexpected features of a case which will influence decision making in the future. This essay should only be submitted after all case reports/essays are assessed and returned to the candidate as it is possible that the assessor feedback from the case reports/essays may contribute to the candidate's learning through the module.

## ANNUAL ASSESSMENT TIMETABLE

Report submission dates
1 <sup>st</sup> February
1 <sup>st</sup> May
1 <sup>st</sup> August
1 <sup>st</sup> November

You may submit as many reports as you have completed by these dates and results should be available within 8 weeks.

## MENTOR

You may wish to have a mentor with which you can discuss cases. Ideal mentors would have post-graduate qualifications (for example, certificate, diploma) relevant to pig practice. RVC academic staff will not be available as mentors.



## INSTRUCTIONS FOR SUBMITTING CASE REPORTS / REFLECTIVE SYNOPSIS / CASE DIARIES

The case report should be written in the third person in a style suitable for publication in a Journal (for example Pig Journal).

The following frame work should be used as a guide to the structure of the case report:

- Unit summary (size, type, location indoor/outdoor etc.)
- Relevant history/medications/vaccinations
- Summary of situation
- Diagnostics
- Treatment
- Response
- Impact on farm of disease and intervention/economics?
- Discussion (this should comprise 35-40% of case report)
  - Students should show the limitations of the case (i.e. insufficient sampling) and to discuss the differential diagnoses, how the disease developed, basic epidemiology, its financial impact, and ethical and welfare implications. Where appropriate they should include a justification of 'pragmatic' advice rather than the 'text-book answers.
- References

## INSTRUCTIONS FOR SUBMITTING CASE REPORTS / REFLECTIVE SYNOPSIS / CASE DIARIES

Please ensure that your case reports include:

- Module name
- Your name
- Case report title
- Word count (excluding the above, numerical data tables, photo titles and references)

A case report/essay that exceeds the permitted word count will be returned to the candidate for re-submission within the word limit. This is in the interest of fairness as it is difficult to compare an essay exceeding the word limit with one which has been kept to the required limits. Additionally, the ability to keep a discussion tightly focused, with every word counting, is an important skill to have developed at this level. Information included in a table will be included in the word count unless it is mainly numerical information (e.g. laboratory data in a table is not included in the word count).

Case reports should be referenced and references cited in a standard format.

- Use *The Journal of Small Animal Practice* as guidance to both citation of references within the text and format of references in the reference list.
- The *Harvard Guide to Referencing* is also available to candidates online (various web sites allow the guide to be downloaded).

Please submit your case reports/essays as a

- MS Word document (97-2003 format or later)

(Please note that as case reports/essays in alternative formats have been unreadable

in MS Word any other format will be sent back to the candidate)

attached to an e-mail and send it to: [certavp@rvc.ac.uk](mailto:certavp@rvc.ac.uk)

The preferred way of naming your file is module code, your name, and the type of work you are submitting, for example, **B-PAP.2 Firstname Surname - Case 1 - MARKING.doc**.

## RECOMMENDED READING LIST

### Books

- Diseases of Swine (2012) eds. Zimmerman J., Karriker, L., Ramirez A., Schwartz K. and Stevenson G. (10<sup>th</sup> edition)
- Pig Diseases (2006) Taylor D.J. (8<sup>th</sup> edition)
- Handbook of Pig Medicine (2007) Jackson P.G.G. and Cockcroft P.D.
- Pathology of the Pig – a Diagnostic Guide (1996) Sims L.D. and Glastonbury J.R.W.
- The Appliance of Pig Science (2004) eds. Thompson J.E., Gill B.P. and Varley M.A.
- Controlled Reproduction in Pigs (1996) Gordon I.
- Whittemore's Science and Practice of Pig Production (2006) eds. Kyriazakis I., Whittemore C. (3<sup>rd</sup> edition)
- Genetics of the Pig (2011) eds. Rothschild M.F. and Ruvinsky A.
- Control Of Pig Reproduction VIII (2009) eds. Rodriquez-Martinez H., Vallet J.L. and Ziecic A.J.

### Journals

- The Pig Journal
- Veterinary Record
- Animal (journal of the BSAS)

### Websites

- Pig Progress: <http://www.pigprogress.net/>
- All about feed: <http://www.allaboutfeed.net/>
- Pigsite: <http://www.thepigsite.com/>
- Promed: <http://www.promedmail.org/>
- BPEX: [www.bpex.org/](http://www.bpex.org/)